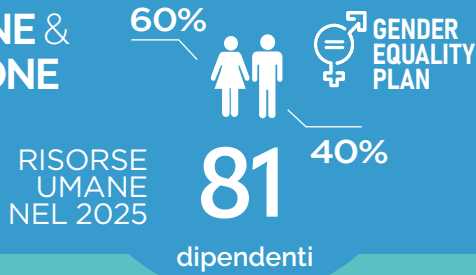


FORMAZIONE &
OCCUPAZIONE



39 studenti di dottorato

33 borsisti

30 tirocinanti

NETWORKING

7 accordi per la gestione diretta di laboratori

7 nuovi accordi stipulati nel 2025

55 accordi di trasferimento tecnologico e collaborazione scientifica

DIFFUSIONE DEL SAPERE SCIENTIFICO

8 eventi Ri.MED

76 pubblicazioni scientifiche

205 ore di formazione nelle scuole

PROPRIETA' INTELLETTUALE

33 portfolio brevetti al 31.12.2025

FINANZIAMENTI PER LA RICERCA

716.883 € aggiudicati nel 2025 attraverso bandi competitivi

28.016.692 € aggiudicati in TOTALE attraverso bandi competitivi

Ri.MED RESEARCH CENTER
WORK IN PROGRESS



17.070 mq
superficie edifici

opening in
2027

€ 232.000.000
valore complessivo dell'investimento

SOCI FONDATORI

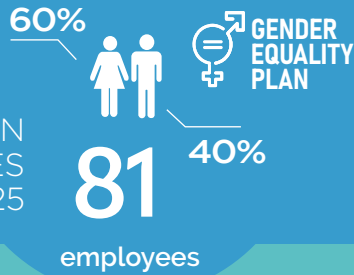



PARTNER CLINICO





TRAINING & EMPLOYMENT

HUMAN
RESOURCES
in 2025



39  PhD students

33  fellows

30  trainees

NETWORKING



7 active agreements
for labs
management



7 new
agreements
signed in 2025



55 active scientific
collaborations and
TT agreements

SCIENTIFIC KNOWLEDGE DISSEMINATION

8  Ri.MED
events

76  scientific
publications

205  hours of training
in schools

INTELLECTUAL PROPERTY



33 patents portfolio
up to 31.12.2025

FUNDINGS FOR RESEARCH



716,883 €
awarded in 2025 through competitive calls

28,016,692 €
awarded IN TOTAL through competitive calls

Ri.MED RESEARCH CENTER WORK IN PROGRESS



17,070 sq m
of buildings

opening in
2027

€ 232,000,000
value of the investment

FOUNDING PARTNERS



CLINICAL PARTNERS

