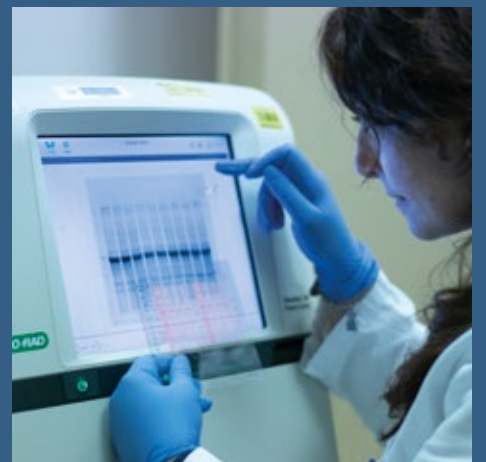
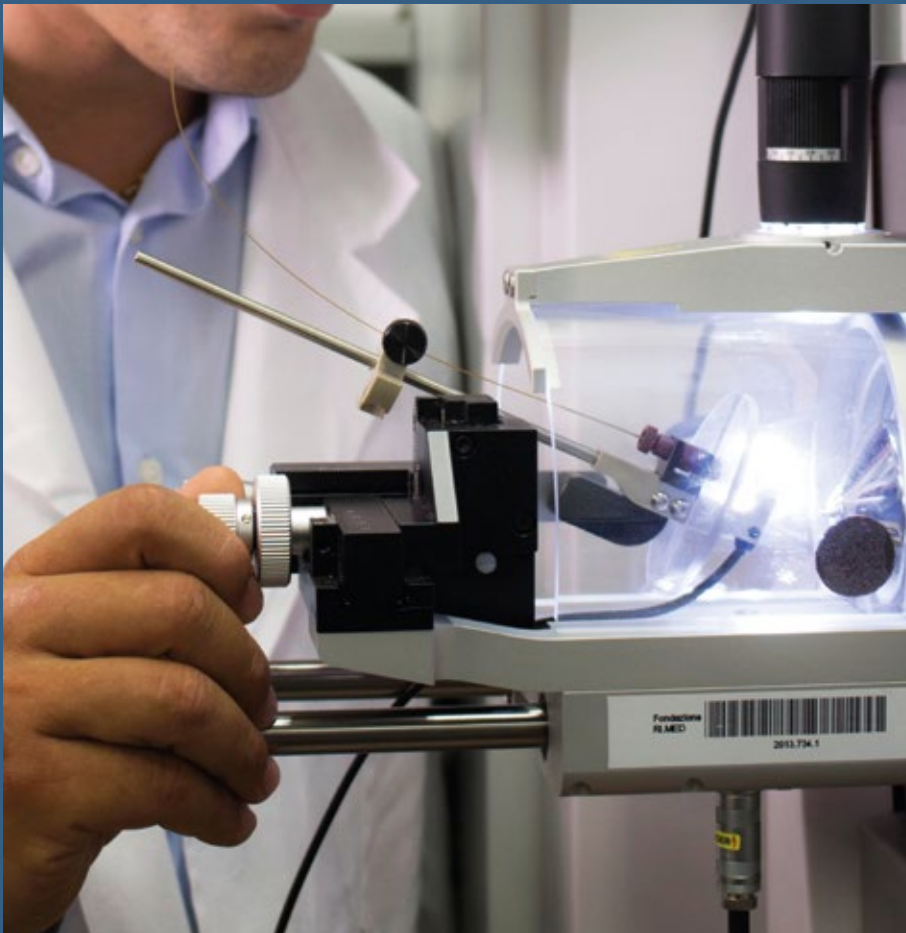


Proteomics Group @ Ri.MED

The Proteomics group uses mass spectrometry based proteomics to dissect pathophysiological mechanisms and identify novel therapeutic targets in cancer and inflammatory diseases.





FOCUS

- Investigate ectodomain shedding in health and disease
- Dissect the role of ADAM17 and iRhoms in cancer and inflammatory diseases
- Investigate protein trafficking and secretion by using high-resolution mass spectrometry



AIMS

- Use unbiased proteomics to better understand pathophysiological processes
- Identify molecular targets and biomarkers to improve healthcare
- Develop new diagnostic and therapeutic approaches to better predict possible side effects of medication
- Support proteomics studies of any size on collaborative basis



OUTCOME

- Remarkable publications in the field of cell biology, biochemistry and proteomics
- Establishment of scientific collaborations with national and international research institutions
- Over thousand samples analyzed by mass-spec for internal studies and external collaborations



EXPERTISE AND RESOURCES

- Mass spectrometry-based analysis of cell secretomes and surfaceomes
- HiSPECS proteomics for unbiased characterization of primary cultures
- Biochemical and proteomic methods to dissect ectodomain shedding and other biological processes
- Skilled researchers with expertise in proteomics, biochemistry and cell biology
- Avant-garde instruments for high-resolution proteomics and fully equipped lab for biochemistry and cell biology



COLLABORATIONS

- University of Liverpool, UK
- University of East Anglia, Norwich UK
- University of Surrey UK
- St. George's, University of London UK
- University of Nottingham UK
- Università di Udine, ITA
- University of Padova, ITA
- University of Palermo, ITA
- IRIB-CNR, Palermo ITA



Fondazione
Ri.MED

www.fondazionerimed.eu

Proteomics Group

c/o The Mediterranean Institute for Transplantation and Advanced Specialized Therapies (ISMETT)

Via Ernesto Tricomi 5 - 90127, Palermo, Italy

Principal investigator: **Simone Dario Scilabra, PhD**
sdscilabra@fondazionerimed.com