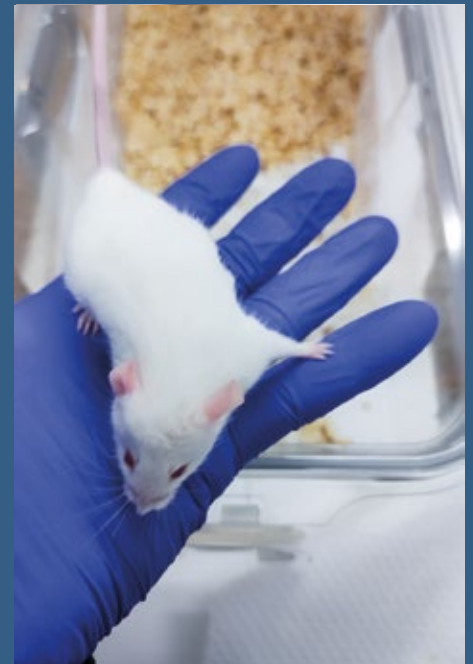


In vivo Preclinical Facility and Animal Welfare Group @ Ri.MED

Our group provides support to researchers for the development of small-sized (rodents and lagomorphs) and large-sized (pigs and sheep) pathological models, is made up of a Veterinarian Expert in Laboratory Animals and an Animal Care





FOCUS

- Test surgical, pharmacological, metabolic, gene and immunological therapies on animal models that mimic terminal organ failure
- *In vivo* Proof-of-concept
- Training for doctors and veterinarians



OUTCOME

- Increase *in vivo* projects authorized by the ministry
- Increase publication of researchers in journals with high impact factor
- Facilitate translational research



COLLABORATIONS

- The Mediterranean Institute for Transplantation and Advanced Specialized Therapies (ISMETT-IRCCS), Palermo, ITA
- University of Palermo, Palermo, ITA
- Experimental Zooprophyllactic Institutes of Sicily (IZS Sicily) Palermo, ITA
- Experimental Zootechnical Institute for Sicily (ISZS) Palermo, ITA



AIMS

- Welfare of Laboratory animals
- Drafting of the protocol
- Standardization of animal model
- 3R Application (Reduction, Replacement and Refinement)
- Training modules for researchers and personnel who perform procedures (function A), take care of animals (function C), euthanize animals (function D) and design procedures and projects (function B)



EXPERTISE AND RESOURCES

- Support to researchers for Health Ministerial authorization, Legislative
- Decree 26/14 (projects, training)
- Relationship with Institutions involved in *in vivo* preclinical research
- Health control and drafting of policies that allow the maintenance of humanized/immunodeficient strains
- Staff training
- Animal cells, tissues and organs banking for *ex vivo* research



Fondazione
Ri.MED

www.fondazionerimed.eu

***In vivo* Preclinical Facility and Animal Welfare Group**

c/o The Mediterranean Institute for Transplantation and Advanced Specialized Therapies (ISMETT)
Via Ernesto Tricomi 5 - 90127, Palermo, Italy

Head of Animal Welfare: Valeria Pagano, PhD
vpagano@fondazionerimed.com