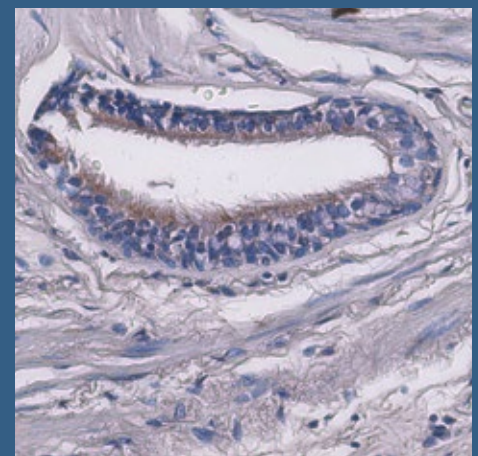
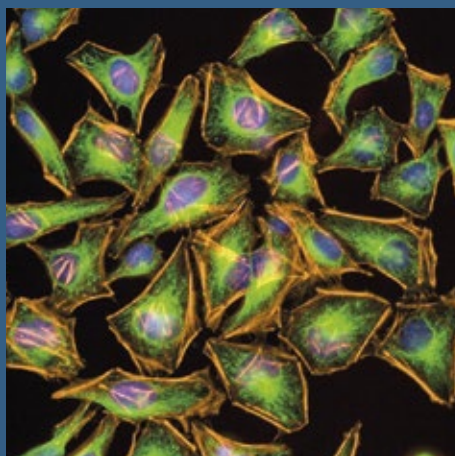
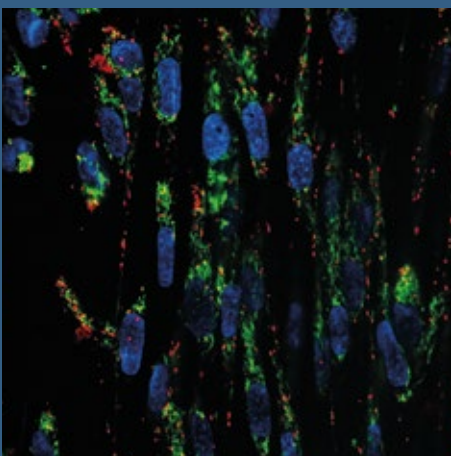
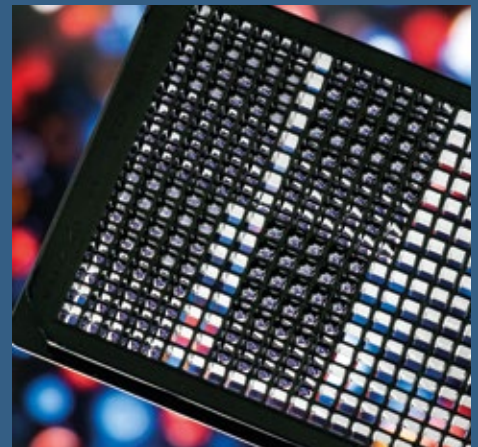
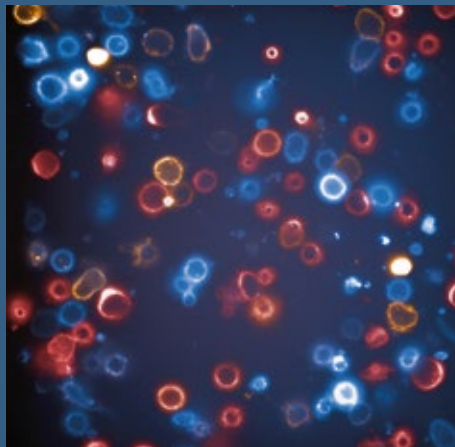
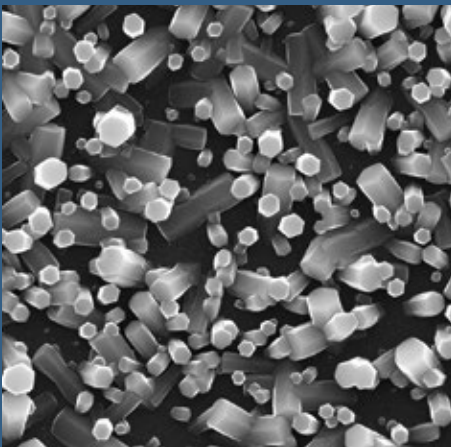
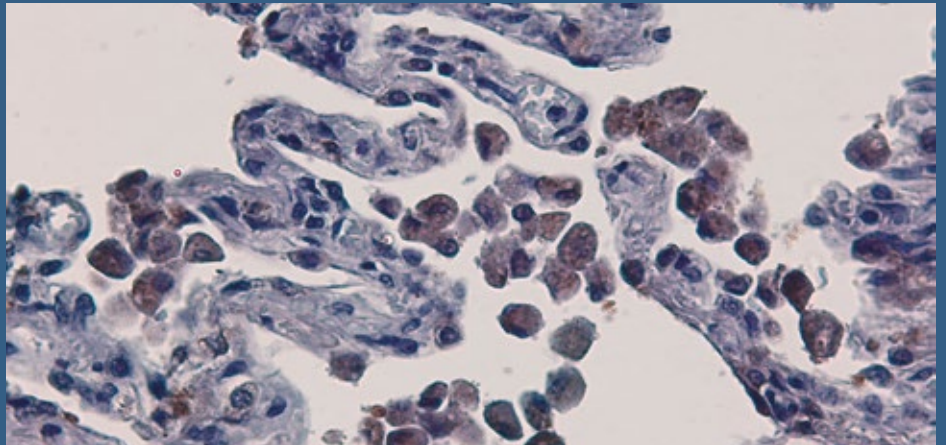
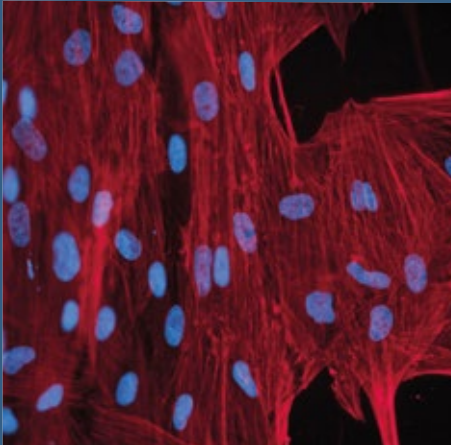


Experimental Lung Research Group @ Ri.MED

Our research aims at unveiling how dysregulation of innate immune responses contributes to the development and progression of chronic lung diseases in order to develop new therapeutic approaches.





FOCUS

- Chronic Lung diseases
- Inflammation
- Innate immunity
- Advanced experimental models



AIMS

- Dissect novel mechanisms promoting chronic inflammatory lung diseases
- Discover new therapeutic targets
- Develop experimental models to study lung diseases



OUTCOME

- Yearly production of scientific papers in international peer-reviewed journals
- Active collaborations with international academic and industrial partners
- Development of new tools for airways disease development and progression



EXPERTISE AND RESOURCES

- Biochemistry, cell and molecular biology
- Advanced 2D and 3D experimental models
- Lung primary cell isolation and culture
- High content imaging



COLLABORATIONS

- The Mediterranean Institute for Transplantation and Advanced Specialized Therapies (ISMETT-IRCCS), Palermo, ITA
- University Medical Center Groningen, NL
- University of Palermo, ITA
- Institute of Translational Pharmacology (IFT) – National Research Council (CNR), ITA
- Institute for Biomedical Research and Innovation (IRIB) – National Research Council (CNR), ITA



Fondazione
Ri.MED

www.fondazionerimed.eu

Experimental Lung Research Group

c/o CNR - National Research Council
Via Ugo La Malfa 153 - 90146, Palermo, Italy

Group Leader: Chiara Cipollina, PhD
ccipollina@fondazionerimed.com